

# YASKAWA

# MOTOMAN MH50-35 II

## Handling & General Applications with the MH-series

Der MOTOMAN MH50-35 II ist ein dynamischer Hochgeschwindigkeitsroboter. Durch seine extra große Reichweite ist er ideal für große Werkstücke in einer Vielzahl von Applikationen wie z. B. Laserschweißen, Beschichten, Leimen, Schneiden und Material Handling.

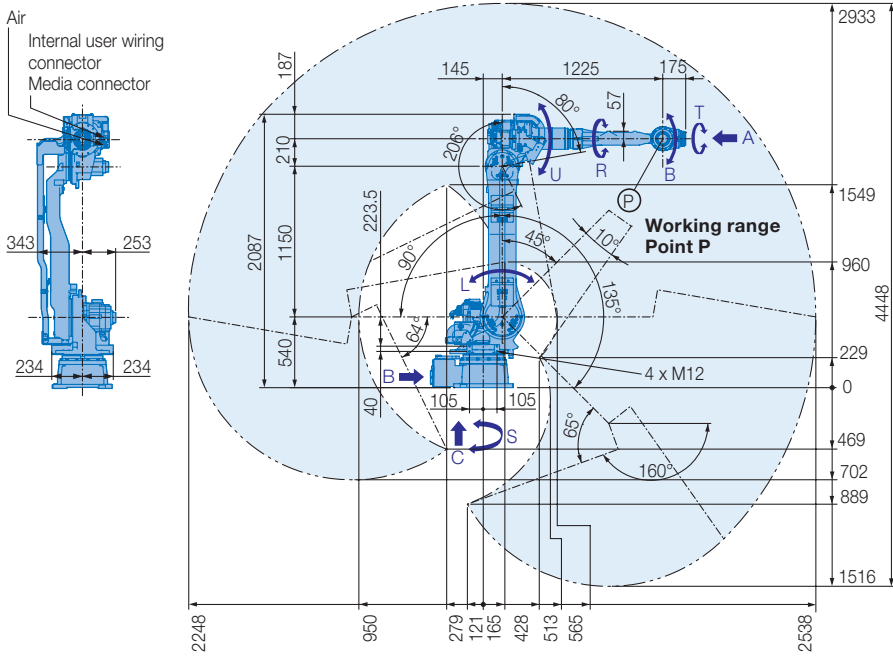


### VORTEILE IM ÜBERBLICK

- Höchste Wiederholgenauigkeit:  $\pm 0,07$  mm
- Der ideale Roboter für eine Vielzahl von Applikationen
- Hohe Achsgeschwindigkeiten
- Max. Arbeitsbereich: 2.538 mm
- Besonders geeignet für große und sperrige Bauteile

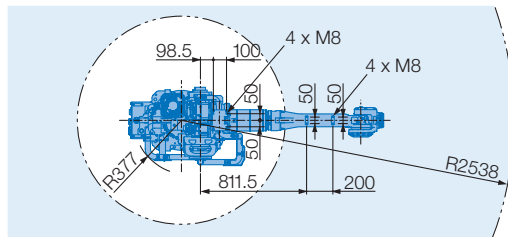
Controlled by  
**DX200**

# MOTOMAN MH50-35 II

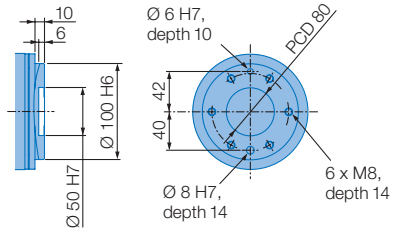


**Please note wall mounting option:**  
+/- 30°  
S-axis limit

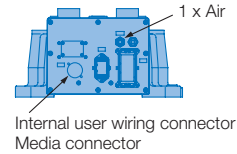
**Please note ceiling mounting option:**  
Depends on B-axis position



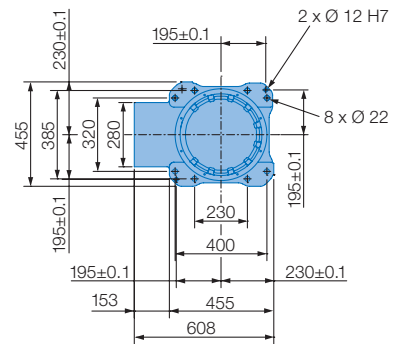
## View A



## View B

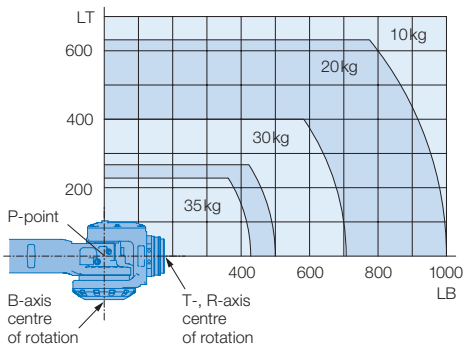


## View C



Mounting options: Floor, ceiling, wall

## Allowable wrist load



<b>Wrist + U-arm in front</b>	Up to 35 kg for attaching load mass including wrist load
<b>U-arm behind</b>	Up to 10 kg, 49 N · m (5 kgf · m) max. for increased moment amount of upper arm (floor-, ceiling-mounted type only)
<b>S-axis below</b>	Up to 30 kg (floor-, ceiling-mounted type only)

All dimensions in mm | Technical data may be subject to change without previous notice | Please request detailed drawings at robotics@yaskawa.eu.com – YR-MH00050II-J20, B-11-2014, A-No. 167075

## Specifications MH50-35 II

Axes	Maximum motion range [°]	Maximum speed [°/sec.]	Allowable moment [Nm]	Allowable moment of inertia [kg · m <sup>2</sup> ]	Controlled axes	
					Max. payload [kg]	
S	±180	180	–	–	Repeat. pos. accuracy [mm]	±0.07
L	+135/-90	140	–	–	Max. working range [mm]	R = 2538
U	+296/-160	178	–	–	Temperature [°C]	0 to +45
R	±360	250	147	10	Humidity [%]	20 – 80
B	±125	250	147	10	Weight [kg]	570
T	±360	360	78	4	Power supply, average [KVA]	4

**YASKAWA**

robotics@yaskawa.eu.com  
www.yaskawa.eu.com

## YASKAWA Headquarters

YASKAWA Europe GmbH · Robotics Division  
Yaskawastraße 1 · D-85391 Allershausen  
Tel. +49 (0) 8166/90-0 · Fax +49 (0) 8166/90-103

## YASKAWA academy and sales office Frankfurt

YASKAWA Europe GmbH · Robotics Division  
Hauptstraße 185 · D-65760 Eschborn  
Tel. +49 (0) 6196/77725-0 · Fax +49 (0) 6196/77725-39