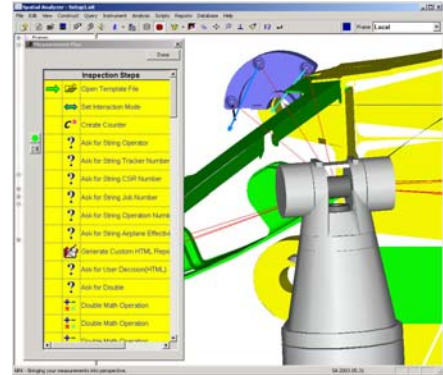


SpatialAnalyzer's Measurement Plan

Engineered for Extreme Measures

Measurement Plan (MP) and Templates form a powerful process control and programming environment for SpatialAnalyzer users. It allows administrators and users to program or script complex operations for production use.

By using SpatialAnalyzer's MPs, operators can script repetitive or automated metrology tasks. These plans can vary from simple utilities constructed in just a few minutes to comprehensive inspection plans that provide go/no go type automation and drive other machinery such as robots or CNC machines.



Measurement Plan with Templates

- SA Template Files
 - CAD Model and Settings
 - Instrument(s) Location and Settings
- MP → Script of Measurement Process
 - Load Template
 - Start Instrument Interface
 - Data Collection → Drive Scanner and Robot
 - Auto-Alignment to CAD
 - Feature Detection & Extraction
 - Feature Analysis
 - Generate Report
 - Save and Archive Inspection

SASUREPlan

by New River Kinematics

The SpatialAnalyzer MP Editor allows you to view and edit measurement plan steps within tree and list controls in the editor. You can also add and delete measurement plan steps, such as add another instrument, CAD export, change in point of view, and delete temporary construction geometry.

Measurement Plan Benefits

- Loop and branching capabilities based on simple logic comparisons
- Run any instrument (or multiple instruments) automatically
- Automated reporting
- Instrument Operations (automated tie-in, drift check, Op checks...)
- File Operations (Import/Export of CAD, Templates, Backups...)
- View Control with animated sequencing
- Standard SA Analysis Functions
- Utility Operations (guide users, issue speech notices, control NC hardware)
- Survey Variability Reduction
- Consistent and Customizable Reporting
- Simple User Interface
- Applicable to any Spatial Metrology Instrument